



8 Star Energy Efficient Home

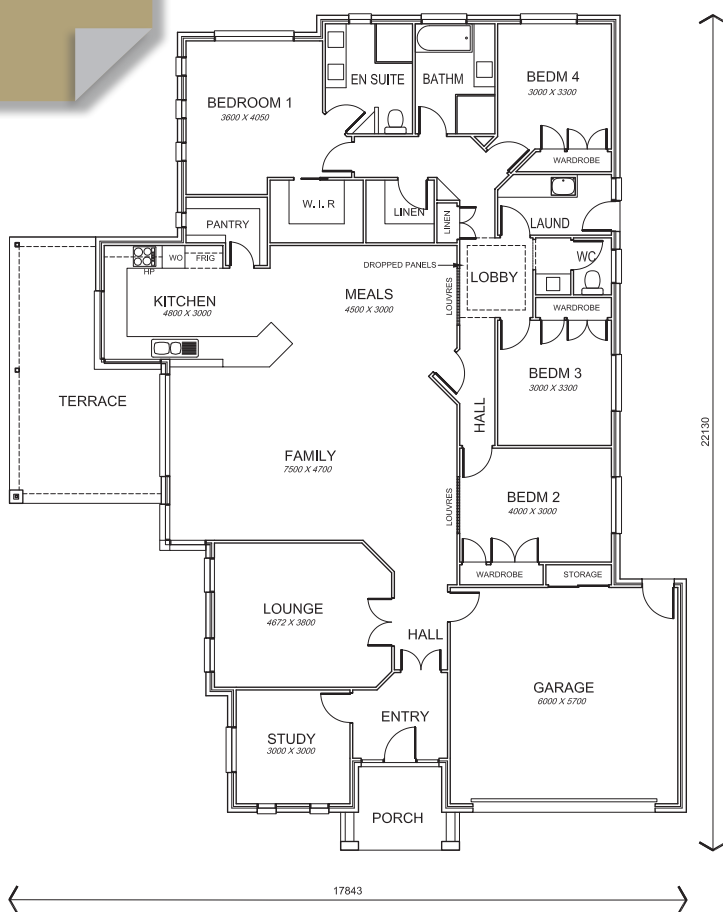


Gaia Phoenix

17843mm x 22130mm



| | |
|--------------|--------------------------|
| Living Areas | 254.0 m ² |
| Porch | 6 m ² |
| Terrace | 22 m ² |
| Total | 282 m² |



DISPLAY HOME
 518 Hume Street
 Middleridge, Toowoomba, 4350
 Tele/ Fax (07) 4635 9049
 Web: www.geoffgibsonhomes.com.au
 Email: sales@geoffgibsonhomes.com.au

OFFICE
 20 Stradbroke Street,
 Toowoomba, Qld 4350
 Tele (07) 4634 4550

