



8 Star Energy Efficient Home

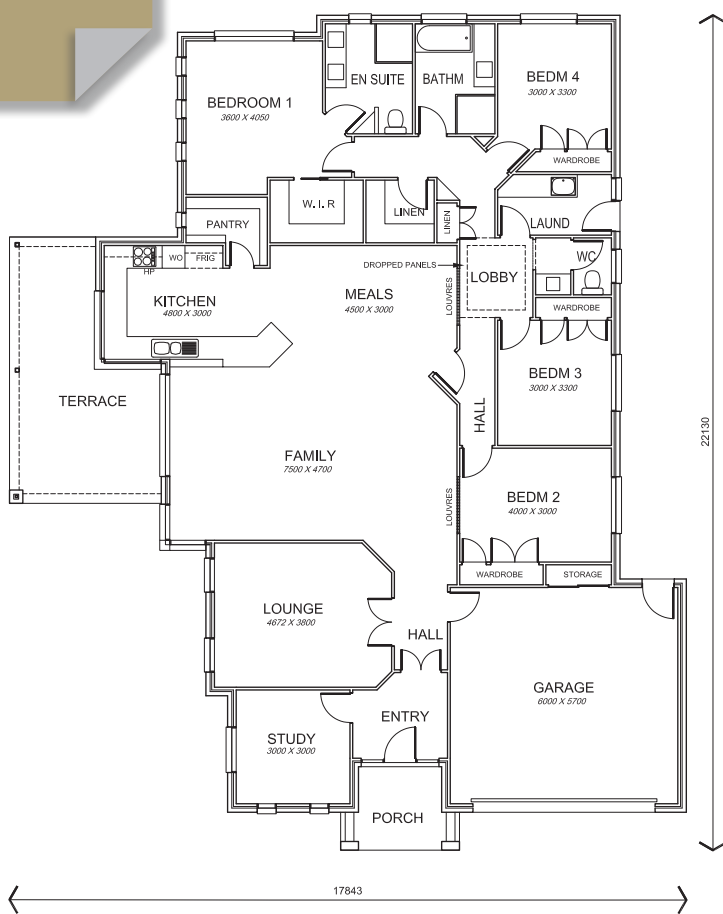


# Gaia Phoenix

17843mm x 22130mm



Living Areas	254.0 m <sup>2</sup>
Porch	6 m <sup>2</sup>
Terrace	22 m <sup>2</sup>
<b>Total</b>	<b>282 m<sup>2</sup></b>



**DISPLAY HOME**  
 518 Hume Street  
 Middleridge, Toowoomba, 4350  
 Tele/ Fax (07) 4635 9049  
 Web: [www.geoffgibsonhomes.com.au](http://www.geoffgibsonhomes.com.au)  
 Email: [sales@geoffgibsonhomes.com.au](mailto:sales@geoffgibsonhomes.com.au)

**OFFICE**  
 20 Stradbroke Street,  
 Toowoomba, Qld 4350  
 Tele (07) 4634 4550

